



BSI Standards Publication

Non-destructive testing — Gamma ray scanning method on process columns

National foreword

This British Standard is the UK implementation of ISO 23159:2020.

The UK participation in its preparation was entrusted to Technical Committee WEE/46/5, Radiographic Testing.

A list of organizations represented on this committee can be obtained on request to its committee manager.

This publication does not purport to include all the necessary provisions of a contract. Users are responsible for its correct application.

© The British Standards Institution 2020
Published by BSI Standards Limited 2020

ISBN 978 0 580 99956 7

ICS 19.100

Compliance with a British Standard cannot confer immunity from legal obligations.

This British Standard was published under the authority of the Standards Policy and Strategy Committee on 31 July 2020.

Amendments/corrigenda issued since publication

Date	Text affected
------	---------------

INTERNATIONAL
STANDARD

ISO
23159

First edition
2020-06

**Non-destructive testing — Gamma ray
scanning method on process columns**

*Essais non destructifs — Méthode de balayage de rayon gamma sur
les colonnes de processus*



Reference number
ISO 23159:2020(E)

© ISO 2020



COPYRIGHT PROTECTED DOCUMENT

© ISO 2020

All rights reserved. Unless otherwise specified, or required in the context of its implementation, no part of this publication may be reproduced or utilized otherwise in any form or by any means, electronic or mechanical, including photocopying, or posting on the internet or an intranet, without prior written permission. Permission can be requested from either ISO at the address below or ISO's member body in the country of the requester.

ISO copyright office
CP 401 • Ch. de Blandonnet 8
CH-1214 Vernier, Geneva
Phone: +41 22 749 01 11
Email: copyright@iso.org
Website: www.iso.org

Published in Switzerland

Contents

Page

Foreword	iv
Introduction	v
1 Scope	1
2 Normative references	1
3 Terms and definitions	1
4 Personnel qualification	2
5 Protection against ionizing radiation	2
6 Equipment requirements	2
7 Execution of work at site	3
7.1 Mechanical design of column and work permission.....	3
7.2 Execution of scanning.....	4
8 Data processing and reporting	4
8.1 Data processing and documentation.....	4
8.2 Report.....	7
Annex A (informative) Recommendations for testing personnel	8
Annex B (informative) Selection of sealed radiation source and its activity	10
Annex C (informative) Scanning equipment	12
Annex D (informative) Preparation of the scanning equipment	14
Annex E (informative) Selection of sources — Detector orientations for scanning	17
Annex F (informative) Interpretation of the scanning data	19
Bibliography	27

Foreword

ISO (the International Organization for Standardization) is a worldwide federation of national standards bodies (ISO member bodies). The work of preparing International Standards is normally carried out through ISO technical committees. Each member body interested in a subject for which a technical committee has been established has the right to be represented on that committee. International organizations, governmental and non-governmental, in liaison with ISO, also take part in the work. ISO collaborates closely with the International Electrotechnical Commission (IEC) on all matters of electrotechnical standardization.

The procedures used to develop this document and those intended for its further maintenance are described in the ISO/IEC Directives, Part 1. In particular, the different approval criteria needed for the different types of ISO documents should be noted. This document was drafted in accordance with the editorial rules of the ISO/IEC Directives, Part 2 (see www.iso.org/directives).

Attention is drawn to the possibility that some of the elements of this document may be the subject of patent rights. ISO shall not be held responsible for identifying any or all such patent rights. Details of any patent rights identified during the development of the document will be in the Introduction and/or on the ISO list of patent declarations received (see www.iso.org/patents).

Any trade name used in this document is information given for the convenience of users and does not constitute an endorsement.

For an explanation of the voluntary nature of standards, the meaning of ISO specific terms and expressions related to conformity assessment, as well as information about ISO's adherence to the World Trade Organization (WTO) principles in the Technical Barriers to Trade (TBT), see www.iso.org/iso/foreword.html.

This document was prepared by Technical Committee ISO/TC 135, *Non-destructive testing*, Subcommittee SC 5, *Radiographic testing*.

Any feedback or questions on this document should be directed to the user's national standards body. A complete listing of these bodies can be found at www.iso.org/members.html.

Introduction

Gamma ray scanning is a non-intrusive and non-destructive method, which is widely used in petrochemical and chemical process plants for troubleshooting and diagnosing purposes. Gamma ray scanning provides an indication of online conditions inside processing columns and vessels. Gamma ray scanning has proven itself as a method for the identification of plant and process problems, resulting in considerable economic savings. The gamma ray scanning method is an inspection which is carried out while the process is in operation, without interruption.

The benefits, obtained from the application of the gamma ray scanning method for problem solving, are many folds, such as safety improvement, environment pollution prevention and economic savings.

Gamma ray scanning is based on the gamma ray transmission techniques. When a gamma ray passes through a column, the intensity of the transmitted beam is related to the path length and density of the material through which the beam passes. An appropriate gamma source and a detector are aligned at the same elevation opposite to each other on the exterior of the column. Measurements of radiation intensity are taken at appropriate positions as the source and detector are moved together along the column. The source-detector data thus obtained are shown in plots of radiation intensity or material density as a function of the position. Detailed analysis of these data enables making assessments about the condition of internal structures and process materials within the column.

Non-destructive testing — Gamma ray scanning method on process columns

IMPORTANT — The electronic file of this document contains colours which are considered to be useful for the correct understanding of the document. Users should therefore consider printing this document using a colour printer.

1 Scope

This document is used for non-destructive testing by the gamma ray scanning method for troubleshooting and testing process columns in industries. This document is applicable to the testing of all kinds of separation processes columns and pipes. This includes columns with different tray configurations and with packed beds.

2 Normative references

The following documents are referred to in the text in such a way that some or all of their content constitutes requirements of this document. For dated references, only the edition cited applies. For undated references, the latest edition of the referenced document (including any amendments) applies.

ISO 5576, *Non-destructive testing — Industrial X-ray and gamma-ray radiology — Vocabulary*

3 Terms and definitions

For the purposes of this document, the terms and definitions given in ISO 5576 and the following apply.

ISO and IEC maintain terminological databases for use in standardization at the following addresses:

- ISO Online browsing platform: available at <http://www.iso.org/obp>
- IEC Electropedia: available at <http://www.electropedia.org/>

3.1 column

vertical cylindrical vessel used for facilitating the separation of a liquid mixture through distillation or extraction

3.2 demister

device, often fitted with vapour-liquid separator vessels, to enhance the removal of liquid droplets or mist entrained in a vapour stream

[SOURCE: ISO/TR 27912:2016, 3.25]

3.3 downcomer

device conveying liquid from one tray to the next one below it in a *column* (3.1)

3.4 entrainment

mist, fog droplets or particles transported by a fluid

[SOURCE: ISO 3857-4:2012, 2.37]

ISO 23159:2020(E)**3.5****flooding**

phenomenon that upsets the normal operation of a distillation *column* (3.1) due to an excessive speed of vapour travelling up the column, preventing liquid from flowing

[SOURCE: ISO 1998-4:1998, 4.10.052]

3.6**foaming**

expansion of liquid that provides high interfacial liquid-vapor contact in a distillation *column* (3.1)

3.7**grid scanning**

system of four or more individual scans in a grid pattern across equal quadrants of a *packed bed column* (3.8) to investigate the packing and liquid/vapor distribution quality through packed or structured trays beds

3.8**packed bed column**

column (3.1) with one or more packed beds or structured trays beds that ensures the separation of two or more components of a mixture

3.9**weeping**

phenomenon that the pressure exerted by the vapor is insufficient to hold up the liquid on the tray and the liquid leaks through perforations from one tray to the next one below

4 Personnel qualification

The personnel shall prove to have received additional training and qualification in gamma ray scanning.

NOTE [Annex A](#) provides recommendations for testing personnel.

5 Protection against ionizing radiation

WARNING — Exposure of any part of the human body to ionizing radiation can be highly injurious to health. Wherever radioactive sources are in use, it is the responsibility of the user of this document to identify the appropriate legal and safety requirements and regulations.

Further information can be found in the IAEA General Safety Requirements^[9].

6 Equipment requirements

Equipment required for a column scan includes the following:

- a suitable sealed radiation source;

NOTE 1 The guidance for the selection of a sealed radiation source is provided in [Annex B](#).

- a suitable source holder in which the source can be raised or lowered on the column; the source holder should be capable of giving a collimated beam and the position at which the beam emerges from the holder should be clearly indicated, see [Annex C](#);

- a suitable radiation detection system (including data acquisition system) by which the radiation intensity at a given measurement time can be measured and recorded at different elevations on the column;

NOTE 2 E.g. the detector can be a sodium iodide crystal. A typical dimension is 5 cm × 5 cm (2" × 2").

- a suitable device (e.g. computer and software) for displaying the data as a scan profile;
- a suitable calibrated radiation monitor by which the radiation level can be monitored for radiation safety; the equivalent dose rate at the boundary of a controlled area is usually defined by national legislation;
- barriers and warning notices to cordon off the “controlled area”;
- appropriate handling tools for the safe transfer of the radioactive source from the transport container to the source holder to be used for scanning.

The equipment shall be tested before deployment to the site and securely packaged for transportation to the work site to ensure good working condition.

The sealed radiation source shall be transported to the worksite in an approved Type A container, labelled and documented, taking national and international regulations into account.

NOTE 3 This can include i.e.

- the vehicle equipment;
- a special driver qualification;
- a special personnel protective equipment;
- a transport permission.

A check list shall be prepared, and all items be checked before shipment. See an example in [Annex D](#).

7 Execution of work at site

7.1 Mechanical design of column and work permission

Prior to carrying out any work, the Level 3 should agree with the client the objectives of the work and scanning procedure. The Level 3

- will acquire details of the column diameter and wall thickness and details of the trays or packed beds;
- will acquire a suitable general arrangement drawing showing the location of features within the column;
- will ensure that there is suitable and safe access to the parts of the column where the scanning team needs to operate;
- will ensure that there are sufficient resources to carry out the work and that a suitable sealed radiation source can be used at the site.

The documentation of the mechanical designs shall:

- select a proper reference (zero) point (manhole, external pipe, etc.);
- determine all positions of internal and external structures and refer it to the point zero;
- generate a list of the characteristics of the column, see an example in [Table 1](#);

Table 1 — Characteristics of the column

Type of the process	Type of the column	Identification of the column	Material of the wall	Internal diameters	Nominal wall thicknesses	Height of the column
				D_i	t	h
				mm	mm	mm
...

- show the orientation of downcomers and liquid flooding;
- ensure that a suitable permit to work is issued by the local supervisor (upon arrival at the work site by the Level 3 or the Level 2);
- inspect the work site;
- ensure that there is safe access;
- visually inspect the transport container;
- visually inspect the source holder;
- confirm by monitoring that the source is still present;
- immediately report any abnormalities to the Level 3, who shall decide on the required action.

7.2 Execution of scanning

The project team will carry out the scan in the agreed manner. Any deviation to the agreed scanning procedure shall be approved by the Level 3 after consultation with the client.

Record the count rate (i.e. counts per time interval) each 5 cm (or other intervals according to the distance between trays), either with a computer or a notebook. The count rates or dose measurements can be registered in a table, see an example in [Table 2](#).

NOTE 1 The determination of time interval for the count rate measurement is described in [Annex B](#).

NOTE 2 The selection of sources (detector orientations for scanning) is described in [Annex E](#).

Table 2 — Record of count rate along the column height

Elevation	Counts per time interval ^a	Remarks ^b
mm		
...

^a The counting time shall be documented.

^b Observations regarding obstacles or external structures shall be noted in the remarks. This will improve the interpretation of the data.

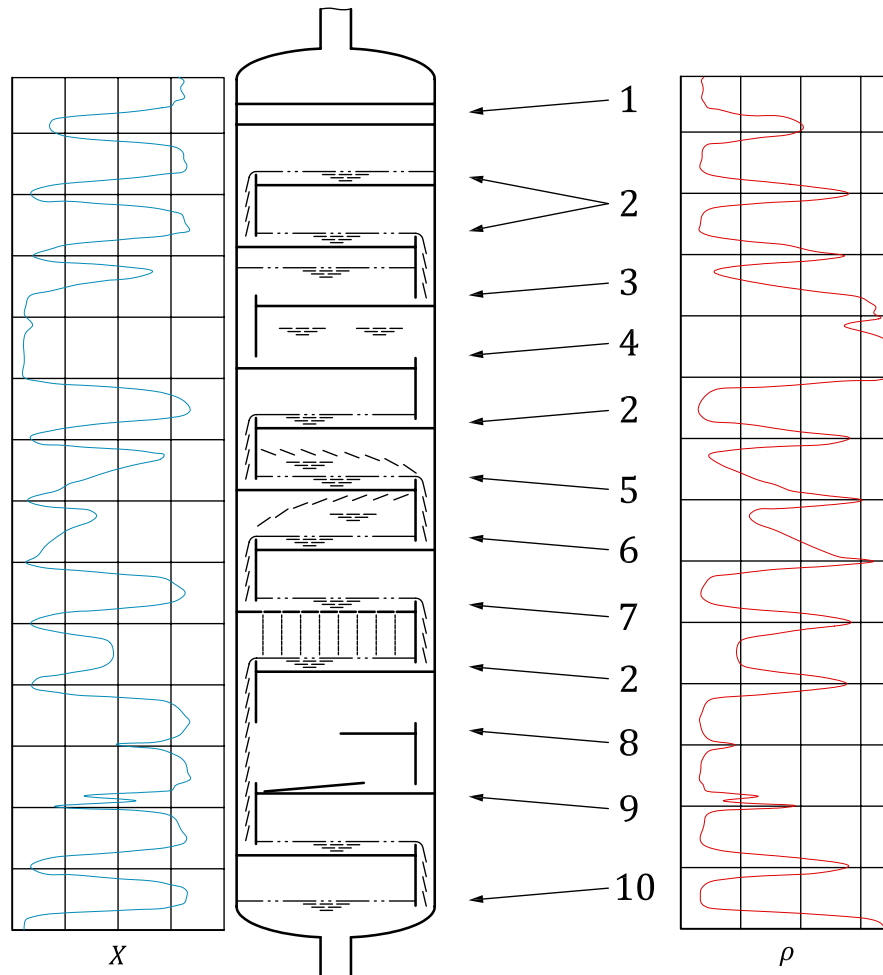
8 Data processing and reporting

8.1 Data processing and documentation

The measurement of the count rate obtained by the radiation detector is recorded in a table. A graphical representation (scan profile) shall be prepared. The gamma ray scanning profile provides information

on the condition of the inside of the column, i.e. the internal structure, damages and liquid/gas phases distributions. [Figure 1](#) shows typical gamma scan profiles in tray columns and [Figure 2](#) for packed bed columns. The interpretation of the scan profile results in conclusions on the status of operating conditions of the column. Some examples of the interpretations of different scan profiles are shown in [Annex F](#).

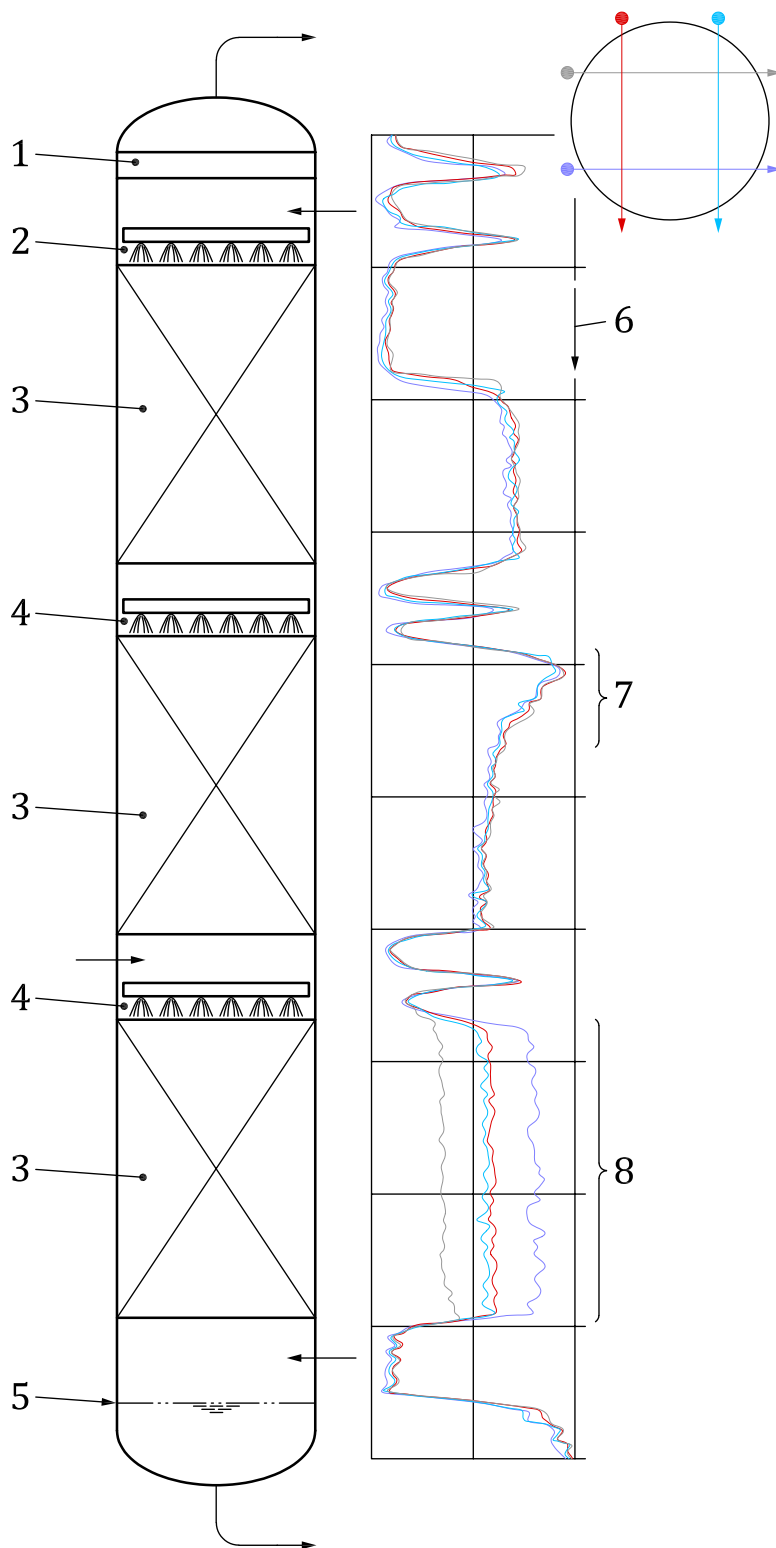
NOTE The client can decide on the provided report for further actions.



Key

- | | |
|---------------------|---------------------------------|
| 1 demister pad | 7 weeping tray |
| 2 normal trays | 8 missing tray |
| 3 high liquid level | 9 debris |
| 4 flooding | 10 base level |
| 5 light foaming | X counts per interval |
| 6 heavy foaming | ρ density (arbitrary unit) |

Figure 1 — Typical gamma scan profiles in tray columns



Key

- 1 demister
- 2 liquid distributor
- 3 packed bed

- 7 fouled packing
- 8 mal liquid distribution
- scan 1

4	liquid re-distributer		scan 2
5	base level		scan 3
6	missing packing		scan 4

Figure 2 — Example of gamma scan profiles in packed bed columns

8.2 Report

The result will be confirmed in a written report to the customer within the time frame agreed upon between the contracting parties. The report contains a detailed description of the column as well as the description of the scanning performances. The report shall include as minimum the following information:

- name of the testing body;
- reference to the contract;
 - names of the client;
 - number of the contract;
 - date of the contract;
- column reference and characteristic;
 - [Table 1](#) and [Table 2](#);
- performed scanning tests;
 - sealed radiation source and activity;
 - detector type and brand;
 - measurement time and detector settings (i.e. high voltage, thresholds);
 - source-to-detector distance and geometry;
 - data acquisition hardware and software;
 - photograph or drawing of the column and the setup;
- any deviation from this document;
- drawing of the scan profile;
- interpretation of the scan profile;
- dates of scanning and report;
- name and signature of the responsible person(s);
- annexes.

Annex A (informative)

Recommendations for testing personnel

A.1 General

To enable column scans to be carried out efficiently, the qualification and responsibilities should be defined prior to any work taking place as follows.

A.2 Level 3 (project manager)

The Level 3 is the person responsible for the planning and execution of the entire job. This includes defining the work scope and allocating sufficiently trained and competent personnel and resources to conduct the work. The Level 3 is responsible for

- ensuring compliance with any statutory legislation for the protection of the workforce, members of the public and the environment;
- interpretation of the data obtained;
- supplying a suitable report to the customer within the agreed period.

The Level 3 has demonstrated the following competence to perform direct gamma ray scanning operations:

- a) the competence to evaluate and interpret results in terms of existing standards, codes, and specifications;
- b) sufficient practical knowledge of product technology to select the scanning suitable procedure and assist in establishing acceptance criteria where none are otherwise available;

Level 3 personnel shall be authorized to:

- a) take full responsibility for a test team and the administration of the contracted work;
- b) establish reviews for editorial and technical correctness and validate instructions and procedures;
- c) interpret standards, specifications and procedures;
- d) carry out and supervise all tasks at all levels;
- e) provide guidance for the testing personnel at all levels.

A.3 Level 2 (senior field technician)

The Level 2 is the person on site responsible for carrying out the instructions of the Level 3 and is responsible for ensuring that the site work is carried out safely and in accordance with the agreed work scope.

The Level 2 technician has demonstrated competence to perform gamma ray scanning in according with this document and shall be authorized by the employer to:

- a) select the suitable scanning method to be used;
- b) define the limitations of application of the scanning method;

- c) translate testing standards, specifications and procedures into instructions adapted to the actual working conditions;
- d) set up and verify equipment settings;
- e) perform and supervise tests;
- f) interpret and evaluate results according to applicable standards, specifications or procedures;
- g) carry out and supervise all tasks at Level 1;
- h) provide guidance for personnel at Level 1;
- i) report the results of testing.

A.4 Level 1 (junior field technician)

Depending upon the particular column and work scope there will be one or more Level 1 technicians who are responsible for safely and efficiently carrying out the instructions of the senior field technician.

The Level 1 Technician has demonstrated competence to carry out gamma ray scanning according to written instructions and under the supervision of Level 2 or Level 3 personnel. Level 1 personnel may be authorized by the employer to perform the following in accordance with the instructions:

- a) set up gamma scanning equipment;
- b) perform the testing;
 - 1) checking the correct function of the testing equipment;
 - 2) noting remarks on any external influences that affects the scanning profile;
- c) record the results of the testing according to written instructions;
- d) report the results.

Level 1 personnel shall neither be responsible for the choice of test method or technique to be used, nor for the interpretation of test results.

The client should supply to the service provider sufficient information to enable the work to be carried out, safely and efficiently in an agreed manner. It is expected that the client will provide such help and assistance as could reasonably be expected between contractors and should provide safe access and for issuing an appropriate work permit.

Annex B (informative)

Selection of sealed radiation source and its activity

Selection of the gamma source (i.e. ^{60}Co , ^{137}Cs or ^{192}Ir) and its activity should be done based on the column diameter, internal configurations in relation to radiation absorption, and statistical limitations of radiation counting. All three factors are interrelated.

The activity required for the gamma scanning can be estimated using [Formula \(B.1\)](#):

$$A = \frac{\dot{H} \cdot d_{\text{SDD}}^2 \cdot 2^{w/d_{\text{HVL}}}}{\Gamma} \quad (\text{B.1})$$

where

- A is the activity (MBq);
- \dot{H} is the equivalent dose rate required at the detector (practically accepted as 10 $\mu\text{Sv/h}$);
- d_{SDD} is the source detector distance (m);
- w is the total column wall thickness traversed by the gamma beam (mm);
- d_{HVL} is the half-value layer thickness (mm) for steel and the source (e.g. 21,6 mm steel for ^{60}Co);
- Γ is the gamma constant for the gamma source (i.e. 0,37 mSv/h in 1 m distance in air for ^{60}Co source of 1 GBq, ^{137}Cs :0,10, ^{192}Ir :0,16).

NOTE If the activity is required in mCi the activity in MBq is based on the relation: 1 MBq = 0,027 mCi.

The value of \dot{H} , mentioned in [Formula \(B.1\)](#) corresponds to the transmitted radiation rate which will give some thousand cps (counts per second) in vapor space of the column (vapor base line); and will decrease to some hundreds cps in the tray level (liquid base line). This estimated count rate gives a good compromise between the contrast (between liquid & vapour phases) and the accuracy of counting.

Normally the detector sensitivity (5 cm \times 5 cm (2" \times 2") NaI(Tl) for ^{60}Co is 7 500 cps/(10 $\mu\text{Sv/h}$). The NaI(Tl) detector sensitivity is determined by placing a sealed source of ^{60}Co or of ^{137}Cs at a distance where the dose rate is 10 $\mu\text{Sv/h}$. The NaI(Tl) detector sensitivity for the ^{60}Co is lower than that for the ^{137}Cs , because the detector NaI(Tl) is more sensitive to low energies of ^{137}Cs than to high energies of ^{60}Co .

In deciding the dose rate that is required at the detector, consideration needs to be given to the sensitivity of the detection system and the number of counts per second required from the detector to give sufficient statistical accuracy. Typically it has been found that if a scintillator detector NaI(Tl) 5 cm \times 5 cm (2" \times 2") is used, then it is estimated that at the dose rate level of $\dot{H} = 10 \mu\text{Sv/h}$, the relative standard deviation of a radiation measurement would be less than 10 %.

An example of source activity calculation is as follows:

A gamma source is needed to scan a distillation column, which has the following parameters:

- internal diameter = 3,1 m;
- wall thickness = 15 mm.

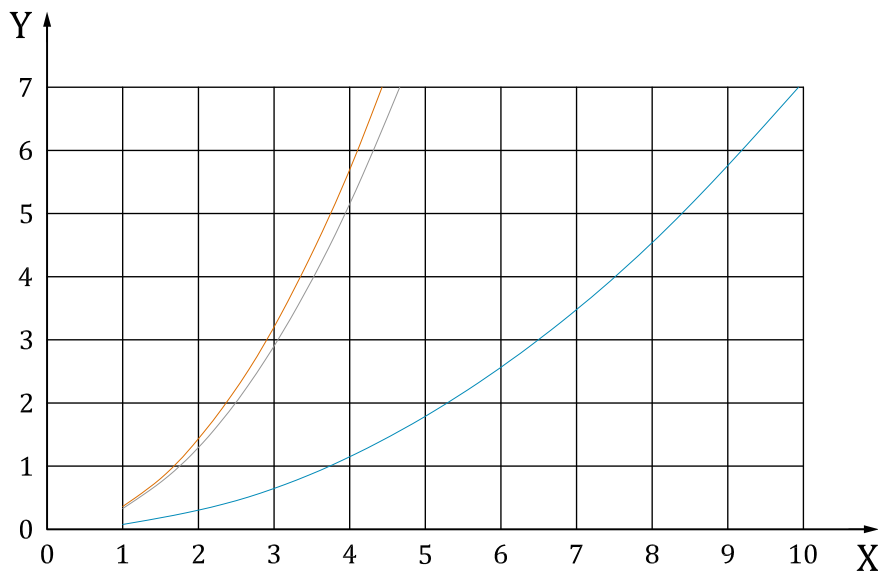
Calculation of the ^{60}Co activity for scanning a column of 3,1 m internal diameter gives:

$$A = \frac{10 \cdot (3,1 + 0,03)^2 \cdot 2^{30/21,6}}{0,37} = 771 \quad (\text{B.2})$$

Figure B.1 gives the ^{60}Co , ^{137}Cs and ^{192}Ir activity in function of the column diameter (wall thickness of 15 mm and the dose rate of 10 $\mu\text{Sv/h}$) with the values of Table B.1.

Table B.1 — Half value layer and gamma constant of ^{60}Co , ^{137}Cs and ^{192}Ir

	Half value layer d_{HVL} mm	Gamma constant Γ $\text{mSv} \cdot \text{m}^2 / (\text{h} \cdot \text{GBq})$
^{60}Co	21,6	0,370
^{137}Cs	16	0,103
^{192}Ir	12,7	0,160



Key

X source-detector distance [m]

Y source activity [GBq]

— ^{60}Co

— ^{137}Cs

— ^{192}Ir

Figure B.1 — Optimal source activity as function of source-detector distance for the scanning of a column with 15 mm wall thickness of steel

Annex C (informative)

Scanning equipment

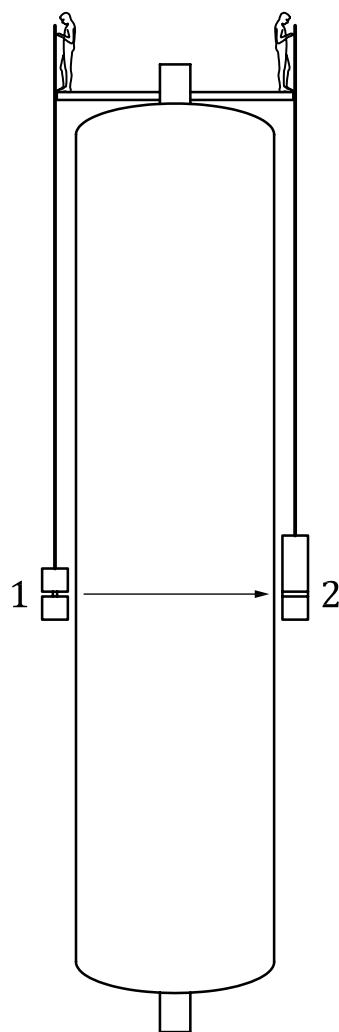
The scanning equipment consists of the radiation source system, the radiation detection system and the scanning system.

Collimators for source and detector shall be used to minimize the effect of scattered radiation on the detector and radiation equipment installed (if any) on the process units near the test site.

A scanning system should be designed so that source and detector collimators openings always remain aligned in the same horizontal plane during the whole process of scanning. The scanning system can be manual, winch-based or automatic (motor-controlled). Great care shall be taken to minimise the swing of source and detector particularly while examining columns with a small diameter or with multi pass trays. These efforts will reduce the measurement errors of transmitted radiation intensity at a given measurement time and improve the reliability of the scanning data.

The collimator can be made using tungsten or depleted uranium instead of lead, to reduce the weight of the holders.

[Figure C.1](#) shows an example of manual gamma ray scanning preparation on a column platform.

**Key**

1 source and source holder with collimator

2 detector and detector holder

Figure C.1 — Example of manual gamma ray scanning preparation on a column platform

Annex D (informative)

Preparation of the scanning equipment

D.1 Check list

D.1.1 General

The following items should be at least part of the check list and be available on the work site.

D.1.2 Radiation source system

The following items should be available for the radiation source system:

- sealed radiation source (i.e. ^{60}Co , ^{137}Cs or ^{192}Ir);
- source holder with panoramic collimation;
- transport container (A-type);
- source handling tools.

D.1.3 Radiation detection system

The following items should be available for the radiation detection system:

- detector holder with collimator;
- scintillation detectors (NaI(Tl) or others);
- counter and connection cables;
- data logger and display (computer or others).

D.1.4 Scanning system

The following items should be available for the scanning system:

- manual scanner;
 - tape measure $\times 2$;
 - guide rope $\times 4$;
- winch scanner;
 - winch with wire $\times 2$;
 - marker pen $\times 2$;
 - guide rope $\times 4$;
 - pulley $\times 2$;
 - rode $\times 2$;
 - carabines;

- tables;
- chairs;
- automatic scanner;
 - source operator;
 - detector operator;
 - tensioner × 2;
 - control box(es);
 - computer;
 - connection cables;
 - pulley × 2;
 - rode × 2;
 - carabines.

D.1.5 Radiological safety equipment

The following items should be available for the radiological safety system:

- survey meter;
- personal dosimeters;
- tape for marking the radiation area.

D.1.6 Others

The following items should also be available:

- mechanical drawing of the column;
- markers;
- communication equipment (complying with industrial safety requirements);
- individual protection and safety equipment;
- extra battery for the computer and detection equipment.

D.2 Verification of the operational condition of the detection system

The radiation detection system needs to be set up before usage in the field and tested with a suitable source.

D.3 Field preparation

The following actions shall be considered in the field preparation:

- mark the scanning lines on column wall at the start and end point;
- install the guide steel cable for guiding the source and detector along the scanning line (optional);
- install the source holder and the detector holder;

ISO 23159:2020(E)

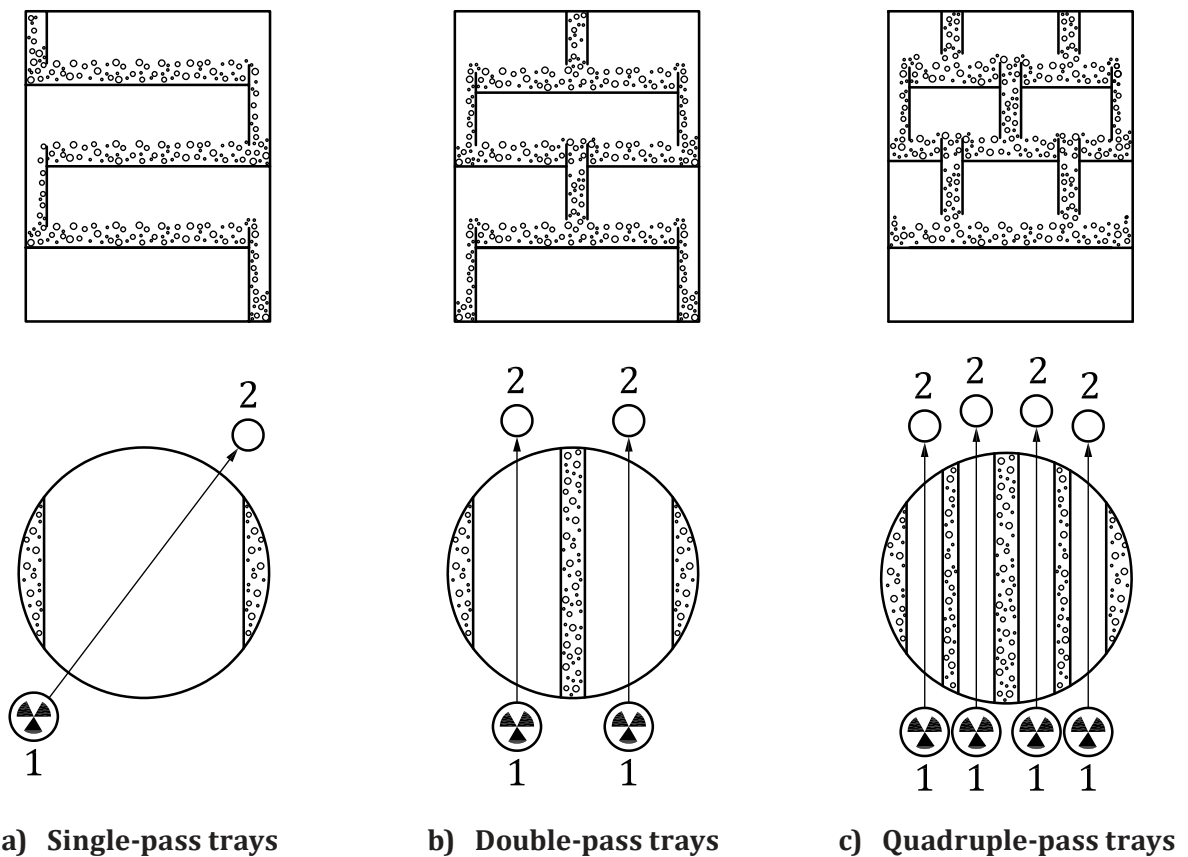
- align the two holders at the start level;
- check the functionality of the radiation detection system and the scanning system.

Annex E (informative)

Selection of sources — Detector orientations for scanning

E.1 Scanning of tray columns

The selection of the scanning lines depends on the orientation of the downcomers, as well as of the types of the column trays. As a guideline, the scanning lines should avoid tray downcomers directions, as shown in [Figure E.1](#).



Key

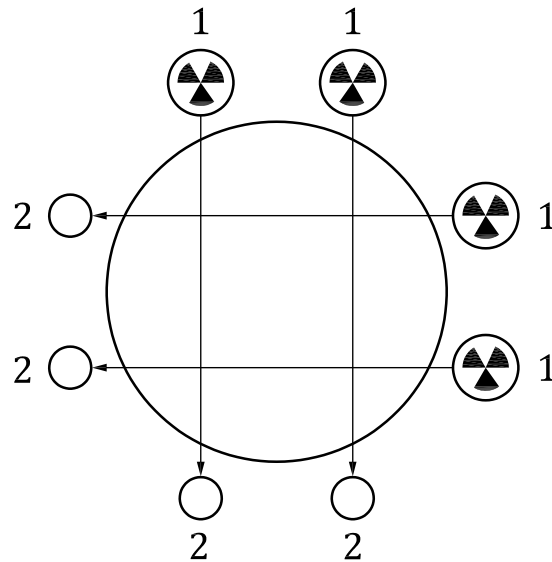
- 1 radioactive source
- 2 detector

Figure E.1 — Typical orientations of source and detector for tray columns

However, scanning lines can be selected to go through the downcomers of trays when the information about the inside structural integrity of the columns or downcomers flooding are required.

E.2 Scanning of packed bed columns

To inspect packed beds, the grid scanning is applied. This technique can also be used for the inspection of the correct installation of distributors as well as the distribution of incoming liquid feed. The schematic of grid scanning is shown in [Figure E.2](#).



Key

- 1 radioactive source
- 2 detector

Figure E.2 — Typical orientations of source and detector for packed bed columns

In general, four grids are recommended for the inspection of packed bed columns. However, the number can be increased depending upon the information required.

The following steps need to be taken for grid scanning:

- check the mechanical design of the column;
- design the scan line directions avoiding external structures;
- select the reference point (zero point) in order to perform comparable profiles;
- mark the scan lines on the wall of the column;
- carry out the measurement of the scan profiles using the same source and detector.

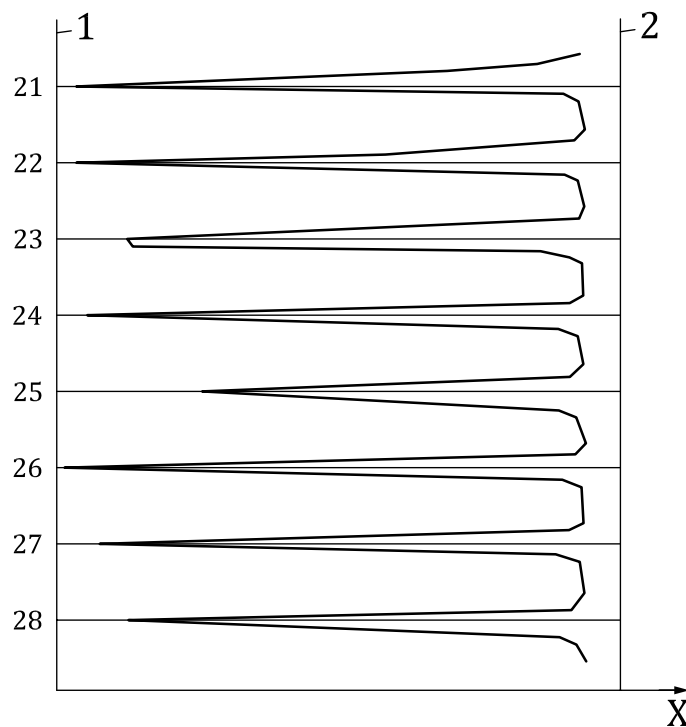
Annex F (informative)

Interpretation of the scanning data

F.1 Models of reference profiles for a tray column

F.1.1 Scanning profile of a normally operating distillation column

In [Figure F.1](#) the scanning lines are as expected, they do not cross the downcomers. Between the trays, the counts per time interval is the same as those of vapour line. No anomaly is shown besides tray 25 which is not identical with the other trays. This difference is not significant to identify an anomaly which could stop the column. The liquid level is almost the same in each tray.



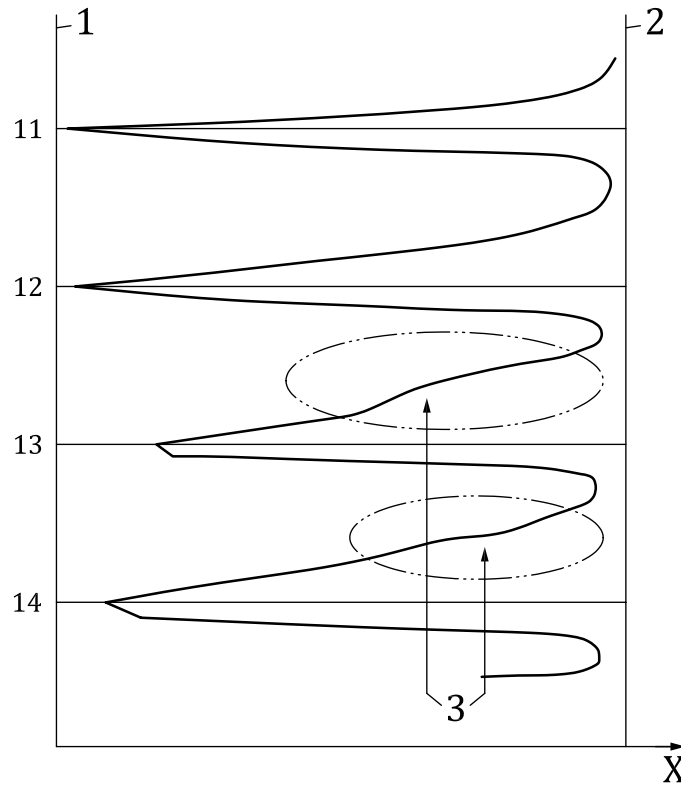
Key

1	liquid base line	X	counts per time interval
2	vapour base line	21 to 28	tray number

Figure F.1 — Example of a scanning profile of a normally operating distillation column

F.1.2 Gamma scanning profile of a column part with foaming

A slight foaming appears on the two identical trays of the scan profile shown in [Figure F.2](#). The slope change appears just above the tray. There are no liquid entrainment or obstructions because there is no deviation from the vapour base line. More details can be obtained if an additional gamma profile is performed with lower energy sources.

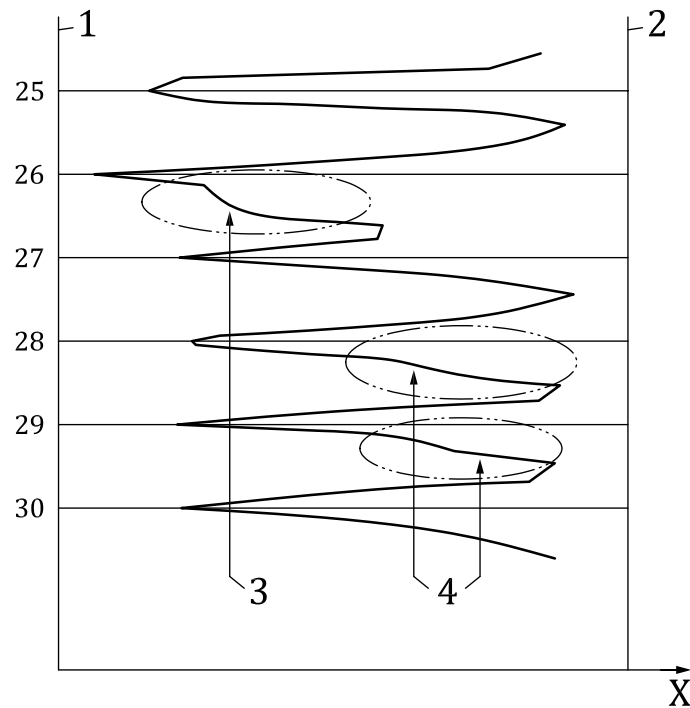
**Key**

1	liquid base line	X	counts per time interval
2	vapour base line	11 to 14	tray number
3	foaming		

Figure F.2 — Example of a gamma scanning profile of a column part with foaming

F.1.3 Gamma profile of a column part with “weeping” (shower)

Weeping is difficult to identify. An additional scan profile performed with a weak energy source is necessary to observe these phenomena better. The slope changes from the upper tray to next bottom tray. Two slight weeping areas are shown on two trays in [Figure F.3](#). Weeping is more evident in tray 26 and may be caused due to the flooding of the tray.

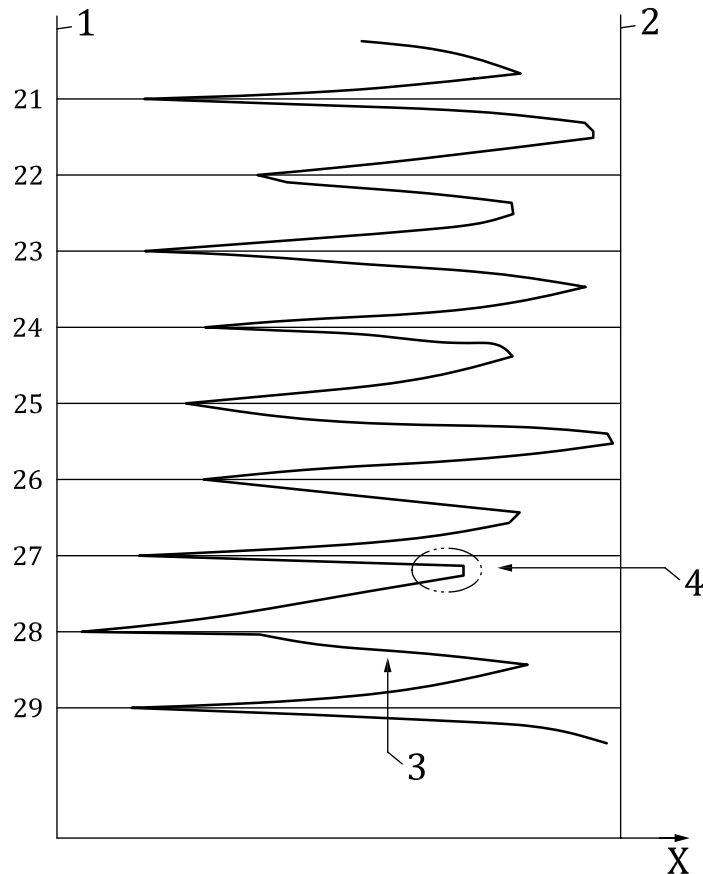
**Key**

- | | | | |
|---|------------------|----------|--------------------------|
| 1 | liquid base line | X | counts per time interval |
| 2 | vapour base line | 25 to 30 | tray number |
| 3 | heavy weeping | | |
| 4 | slight weeping | | |

Figure F.3 — Example of a gamma profile of a column part with “weeping” (shower)

F.1.4 Scanning profile through the downcomers

[Figure F.4](#) shows that the detected counts per time interval of the vapour phase is lower under even trays (22, 24 and 26) than under the odd trays. The scan of even trays partially crosses the downcomers and the signals are absorbed more. A bad separation liquid/vapour is observed between tray 27 and tray 28. This means that there is slight liquid entrainment from tray 28 to tray 27. The liquid level on tray 28 is higher. Liquid weeping is visible at tray 28.

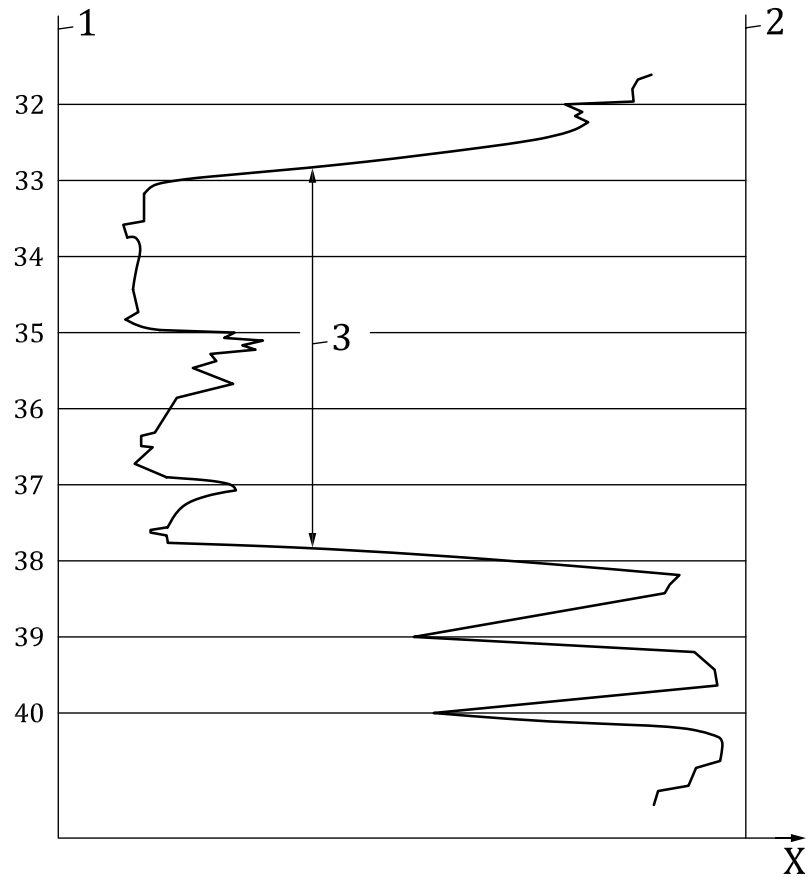
**Key**

- | | | | |
|---|---------------------------|----------|--------------------------|
| 1 | liquid base line | X | counts per time interval |
| 2 | vapour base line | 25 to 30 | tray number |
| 3 | weeping | | |
| 4 | slight liquid entrainment | | |

Figure F.4 — Example of a scanning profile through the downcomers

F.1.5 Scanning profile of flooding due to blockage at downcomer

The scan profile in [Figure F.5](#) shows the presence of a blockage of the downcomer of tray 38. The blockage causes heavy liquid accumulation up to tray 33. This blockage also hinders the normal liquid flow from tray 39 to tray 40. Tray 39 and 40 are normal, but tray 40 holds less liquid than tray 39. There is normal separation of liquid/vapour between trays 39 and 40.

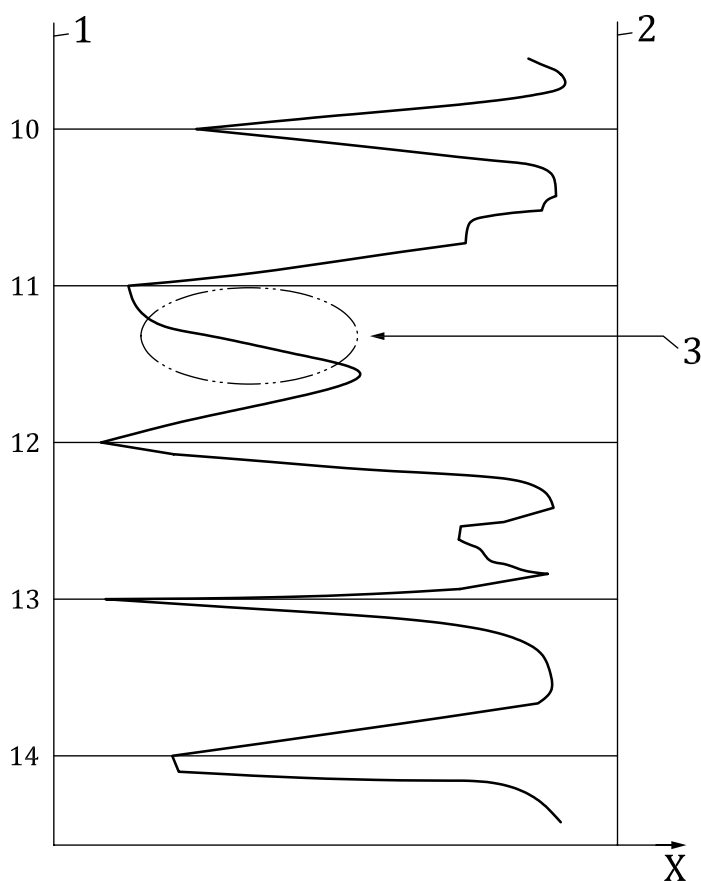
**Key**

1	liquid base line	X	counts per time interval
2	vapour base line	32 to 40	tray number
3	accumulation of liquid		

Figure F.5 — Example of a scanning profile of flooding due to blockage at downcomer

F.1.6 Scanning profile of weeping condition

[Figure F.6](#) shows that there is a bad separation of liquid and vapour between trays 11 and 12. This condition is due to partial blockage of downcomer of tray 12. There is clear evidence of weeping on tray 11 from the transmitted intensity of the gamma ray.

**Key**

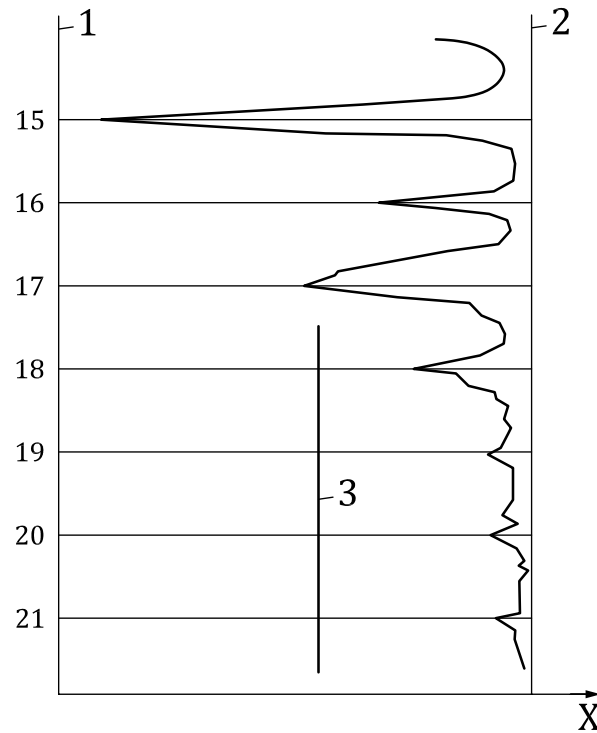
1	liquid base line	X	counts per time interval
2	vapour base line	10 to 14	tray number
3	weeping		

Figure F.6 — Example of a scanning profile of weeping condition

F.1.7 Damaged trays

[Figure F.7](#) shows the following:

- tray 15 is intact and holding liquid;
- tray 16 holds a relatively small amount of liquid and is partially damaged;
- tray 17 is intact but slight flooding is observed;
- tray 18 is partially damaged;
- trays 19, 20 and 21 are totally damaged and are displaced.

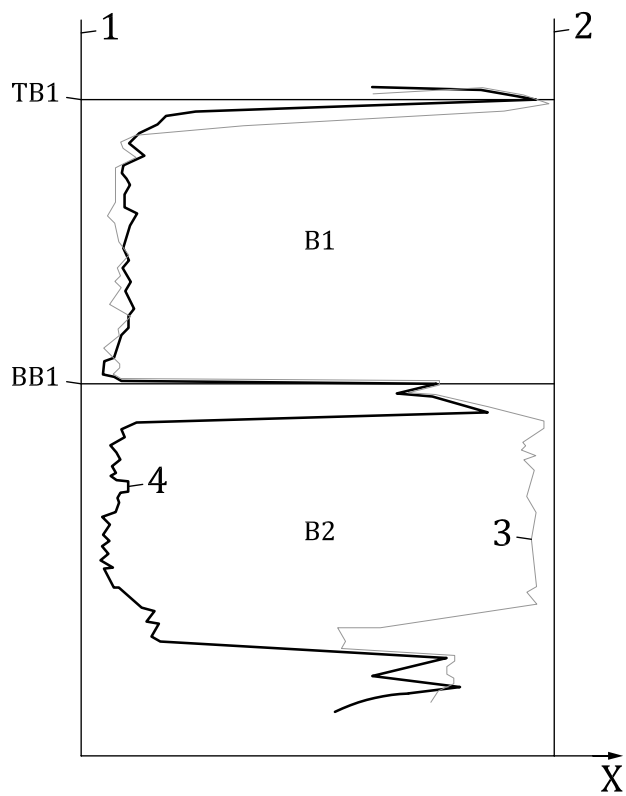
**Key**

- | | | | |
|---|-----------------------------------|----------|--------------------------|
| 1 | liquid base line | X | counts per time interval |
| 2 | vapour base line | 15 to 21 | tray number |
| 3 | zone of dislodged collapsed trays | | |

Figure F.7 — Example of normal, displaced and missing trays

F.2 Model of reference profiles for a packed bed column

[Figure F.8](#) shows that there are two packed beds in the column, and two scans were conducted. The figure shows the bed 2 (first scan – green line) undergone serious damage. The bed was totally collapsed or displaced. Results for the second scan (blue line) show the bed 2 was intact. Bed 1 was intact from both scans.

**Key**

1	liquid base line	B1	bed 1
2	vapour base line	B2	bed 2
3	first scan	TB1	top of bed 1
4	second scan	BB1	bottom of bed 1
		X	counts per time interval

Figure F.8 — Example of displaced packed beds

Bibliography

- [1] ISO 1998-4:1998, *Petroleum industry — Terminology — Part 4: Refining*
- [2] ISO 3857-4:2012, *Compressors, pneumatic tools and machines — Vocabulary — Part 4: Air treatment*
- [3] ISO 5579, *Non-destructive testing — Radiographic testing of metallic materials using film and X- or gamma rays — Basic rules*
- [4] ISO 9712, *Non-destructive testing — Qualification and certification of NDT personnel*
- [5] ISO 12749-2, *Nuclear energy, nuclear technologies, and radiological protection — Vocabulary — Part 2: Radiological protection*
- [6] ISO/TR 27912:2016, *Carbon dioxide capture — Carbon dioxide capture systems, technologies and processes*
- [7] INTERNATIONAL ATOMIC ENERGY AGENCY, Series No. SSR-6, *Regulations for the Safe Transport of Radioactive Material*, Vienna, October 2012 (see https://www-pub.iaea.org/MTCD/Publications/PDF/PUB1798_web.pdf)
- [8] INTERNATIONAL ATOMIC ENERGY AGENCY, *RADIOISOTOPE APPLICATIONS FOR TROUBLESHOOTING AND OPTIMIZING INDUSTRIAL PROCESSES*, VIENNA, MARCH, 2004 (see https://www-pub.iaea.org/MTCD/publications/PDF/Pub1181_web.pdf)
- [9] INTERNATIONAL ATOMIC ENERGY AGENCY, *GSR Part 3, Radiation Protection and Safety of Radiation Sources*, Vienna 2014 (see https://www-pub.iaea.org/MTCD/Publications/PDF/Pub1578_web-57265295.pdf)
- [10] CHARLTON J.S. *Radioisotope Techniques for Problem-Solving in Industrial Process Plants*. Leonard Hill, 1986
- [11] ABDULLAH J.B., *Gamma Scanning for Troubleshooting, Optimisation and Predictive Maintenance of Distillation Columns in Petroleum Refineries and Chemical Plants*, Proceedings of the International Nuclear Conference 2002, Kuala Lumpur, Malaysia, 2002
- [12] HILLS A.E., *Practical Guidebook for Radioisotope-Based Technology in Industry*, IAEA/RCA RAS/8/078, 1999
- [13] ISTR A Certification and Qualification (see www.istra-society.org)

British Standards Institution (BSI)

BSI is the national body responsible for preparing British Standards and other standards-related publications, information and services.

BSI is incorporated by Royal Charter. British Standards and other standardization products are published by BSI Standards Limited.

About us

We bring together business, industry, government, consumers, innovators and others to shape their combined experience and expertise into standards-based solutions.

The knowledge embodied in our standards has been carefully assembled in a dependable format and refined through our open consultation process. Organizations of all sizes and across all sectors choose standards to help them achieve their goals.

Information on standards

We can provide you with the knowledge that your organization needs to succeed. Find out more about British Standards by visiting our website at bsigroup.com/standards or contacting our Customer Services team or Knowledge Centre.

Buying standards

You can buy and download PDF versions of BSI publications, including British and adopted European and international standards, through our website at bsigroup.com/shop, where hard copies can also be purchased.

If you need international and foreign standards from other Standards Development Organizations, hard copies can be ordered from our Customer Services team.

Copyright in BSI publications

All the content in BSI publications, including British Standards, is the property of and copyrighted by BSI or some person or entity that owns copyright in the information used (such as the international standardization bodies) and has formally licensed such information to BSI for commercial publication and use.

Save for the provisions below, you may not transfer, share or disseminate any portion of the standard to any other person. You may not adapt, distribute, commercially exploit or publicly display the standard or any portion thereof in any manner whatsoever without BSI's prior written consent.

Storing and using standards

Standards purchased in soft copy format:

- A British Standard purchased in soft copy format is licensed to a sole named user for personal or internal company use only.
- The standard may be stored on more than one device provided that it is accessible by the sole named user only and that only one copy is accessed at any one time.
- A single paper copy may be printed for personal or internal company use only.

Standards purchased in hard copy format:

- A British Standard purchased in hard copy format is for personal or internal company use only.
- It may not be further reproduced – in any format – to create an additional copy. This includes scanning of the document.

If you need more than one copy of the document, or if you wish to share the document on an internal network, you can save money by choosing a subscription product (see 'Subscriptions').

Reproducing extracts

For permission to reproduce content from BSI publications contact the BSI Copyright and Licensing team.

Subscriptions

Our range of subscription services are designed to make using standards easier for you. For further information on our subscription products go to bsigroup.com/subscriptions.

With **British Standards Online (BSOL)** you'll have instant access to over 55,000 British and adopted European and international standards from your desktop. It's available 24/7 and is refreshed daily so you'll always be up to date.

You can keep in touch with standards developments and receive substantial discounts on the purchase price of standards, both in single copy and subscription format, by becoming a **BSI Subscribing Member**.

PLUS is an updating service exclusive to BSI Subscribing Members. You will automatically receive the latest hard copy of your standards when they're revised or replaced.

To find out more about becoming a BSI Subscribing Member and the benefits of membership, please visit bsigroup.com/shop.

With a **Multi-User Network Licence (MUNL)** you are able to host standards publications on your intranet. Licences can cover as few or as many users as you wish. With updates supplied as soon as they're available, you can be sure your documentation is current. For further information, email cservices@bsigroup.com.

Revisions

Our British Standards and other publications are updated by amendment or revision.

We continually improve the quality of our products and services to benefit your business. If you find an inaccuracy or ambiguity within a British Standard or other BSI publication please inform the Knowledge Centre.

Useful Contacts

Customer Services

Tel: +44 345 086 9001

Email: cservices@bsigroup.com

Subscriptions

Tel: +44 345 086 9001

Email: subscriptions@bsigroup.com

Knowledge Centre

Tel: +44 20 8996 7004

Email: knowledgecentre@bsigroup.com

Copyright & Licensing

Tel: +44 20 8996 7070

Email: copyright@bsigroup.com

BSI Group Headquarters

389 Chiswick High Road London W4 4AL UK